



## 2019 Championship Series May 25 – September 22, 2019

Wayzata Yacht Club (WYC) - Apostle Islands Station (AIS)  
Bayfield Wisconsin, USA

### SAILING INSTRUCTIONS

The notation [DP] in a rule in the Sailing Instructions means that the penalty for a breach of that rule may, at the discretion of the protest committee, be less than disqualification.

The notation [NP] in a rule in the Sailing Instructions means that breaches in this rule will not be grounds for a protest by a boat. This changes Racing Rules of Sailing (RRS) 60.1 (a).

Code of Conduct. The registered competitor shall be responsible for conduct of the entire crew before, during, and after the Race while at Race related locations for Race related events. See RRS 2 and 69.

**1. Rules.** The series will be governed by the rules as defined in the *Racing Rules of Sailing*.

**1.1** Each boat shall also comply with the following:

**1.1.1** All U.S. Coast Guard and other applicable governmental laws, rules and regulations.

**1.1.2** The 2019 WYC/AIS Safety Equipment Requirements, which can be found at [www.wyc.org/ais](http://www.wyc.org/ais), and the relevant Yachtscoring.com page for each event.

**1.2** The following Racing rules will be changed as follows:

**1.2.1** SI 4.2 changes RRS Race Signal AP

**1.2.2** SI 8.1.4 changes RRS 18 and 28 and adds the definition of a Waypoint

**1.2.3** SI 10.5.1 changes RRS 29.1

**1.2.4** SI 10.5.2 changes RRS 29.2

**1.2.5** SI 12.1 changes RRS 44.1

**1.2.6** SI 14.2.2 modifies RRS 61.2 and 61.3

**1.2.7** SI 14.4 changes RRS 62

**1.2.8** SI 15.2 changes RRS 35, A4 and A5

**1.2.9** SI 15.3 changes RRS A2.1

**2. Notice to Competitors.**

**2.1** Official notices to competitors will be posted at the dock office of the Apostle Islands Marina (107 Manypenny Ave, Bayfield) and the relevant Yachtscoring.com event page.



### **3. Changes to Sailing Instructions.**

- 3.1** Changes to the SIs will be posted on the Official Notice Board and the relevant Yachtscoring.com event page by 0900 hrs; changes to the SIs will also be announced approximately two hours prior to the warning signal for the first race of the day by the Race Committee (RC) on VHF Radio (VHF), SI 17. Any change to the schedule of races shall be posted by 2000 hrs on the day before it will take effect except as defined in SI 5.2 and 5.3.
- 3.2** In accordance with RRS 90.2(c) the RC may alter these SIs on the water by hailing the fleets and making the change on VHF.

### **4. Signals made ashore**

- 4.1** Signals made ashore will be displayed on the RC Signal Boat at dock at the Blackhawk Boat Yard (East Dock Road, Bayfield)
- 4.2** When flag AP is displayed ashore, '1 minute' is replaced with 'not less than 1 hour' in the Race Signal AP. This changes RRS Race Signal AP.

### **5. Schedule of Races.**

- 5.1** The schedule of races is listed in Appendix A.
- 5.2** The sailing of subsequent races for the Buoy Fleet will be announced by RC on VHF.
- 5.3** The sailing of subsequent races for the MD/JAM/Multihull Fleets will be announced via VHF during the day's 0900 radio call.

### **6. Class Flags.**

- 6.1** Classes will be defined and posted on the Official notice board and the relevant Yachtscoring.com event page prior to first race of the series.

### **7. Racing Areas.**

- 7.1** Racing may be held anywhere in, near or around the Apostle Islands. Appendix B shows the partial area in which racing may be held.

### **8. Marks**

- 8.1** Marks may be:
  - 8.1.1** Temporary buoys (which may be red, orange, white or green and be in the form of cylinders, spheres, or tetrahedrons),
  - 8.1.2** Islands,
  - 8.1.3** Government navigation marks/buoys,
  - 8.1.4** Waypoints as defined by latitude and longitude coordinates, that the course requires a boat to leave on a specified side. Any use of a waypoint shall be in accordance with World Sailing Appendix WP. Appendix WP can be found at



[www.wyc.org/ais](http://www.wyc.org/ais) and the relevant Yachtscore.com event page. Appendix WP changes RRS 18 and 28 and adds a definition of a waypoint.

- 8.2** All boats shall obey all government navigation marks/buoys while racing, except if the navigation mark/buoy is a mark of the course, then such navigation mark/buoy shall be rounded pursuant to RC instructions.

## 9. The Courses.

- 9.1** Course diagrams for the Buoy Fleet are included in Appendix C. The specific windward mark that each class shall round will be posted with the course description by the RC. The Buoy Fleet, at the discretion of the RC, may also sail a mid-distance course as described in SI 9.2.
- 9.2** Appendix B shows the approximate location of the marks that might be used to define the course for the MD, JAM, and Multihull fleets, or when all fleets sail a mid-distance course.
- 9.3** Courses will be posted on the display board on the RC Signal Boat. They will show the course, the order in which the marks are to be passed, and the side on which each mark is to be passed. The RC will also announce the course via VHF.
- 9.4** The approximate compass bearing and distance from the starting line to Windward Mark will be displayed from RC Boat.

## 10. The Start

- 10.1** Start order: Jib-and-Main Fleet, Mid-Distance Fleet, Buoy Fleet, Multihull. If there is only one boat entered for a fleet, the RC may combine that fleet with another fleet for its start.
- 10.2** Races will be started using RRS 26. The warning signal of each succeeding class may be made with the start signal of the preceding class.
- 10.3** Boats whose warning signal has not been made shall avoid the starting area during the starting sequence for other races. [DP]
- 10.4** The starting line will be between a staff displaying an orange flag on an RC Signal Boat and course side of the starting mark.
- 10.5** Recalls will be signaled as follows:
- 10.5.1** When signaling an individual recall, RC shall announce via VHF the sail number(s) of boat(s) identified as being OCS. This changes RRS 29.1.
- 10.5.2** When signaling a General Recall the recalled class will go to the end of the starting order. This changes RRS 29.2
- 10.6** Any boat using a sail with an alternate sail number shall report the proper sail number to the RC in writing before 0900 at the Apostle Island Marina dock office, or via VHF hail no later than 30-minutes prior to the warning signal for the first race of the day. [DP]



## 11. The Finish

### 11.1 Buoy Fleet:

**11.1.1** Will be between a staff displaying an orange flag on an RC Boat and the course side of the mark nearest to the RC Signal Boat, unless an alternative location is announced with the course description.

### 11.2 MD/JAM/Multihull Fleets:

**11.2.1** The Bayfield Fishing Dock finish line may be used for all MD/JAM/Multihull Fleets. Alternatively, MD/JAM/Multihull Fleets may finish between a staff displaying an orange flag on an RC Signal Boat and the course side of the mark nearest to the RC Signal Boat.

**11.2.2** When the Bayfield Fishing Dock is used as one mark of the finish line, the other end will be the course side of a mark approximately 200 feet from the end of the pier, and in a line perpendicular to the dock.

**11.3** At the discretion of the RC, a race may be finished at a waypoint. A waypoint is defined by latitude and longitude coordinates. When finishing at a waypoint, the finish line is a line through the waypoint at a 90-degree angle to the last leg and of the shortest practical length. Boats shall log their GPS finish time. Boats finishing shall also log the sail number of the boat ahead and behind their finish position if available. [DP]

## 12. Penalty System.

**12.1** RRS Appendix V1 is in effect. This changes RRS 44.1.

**12.2** RRS Appendix T – Arbitration will be in effect for this series.

## 13. Time Limits

### 13.1 Buoy Fleet:

**13.1.1** The time limit for the first boat of a class to finish buoy races will be 3 hours from their start signal, except when sailing a MD/JAM course where 13.2.1 will apply. Any boat within the class not finishing a race within 1 hour after the first boat of the class finishes will be scored TLE.

### 13.2 MD/JAM/Multihull Fleets:

**13.2.1** There will be no time limit for the MD and JAM and Multihull Fleet courses. RC will be on-station at the finish line (either on-the-water, or ashore) for 4 hours from the fleet's starting signal. Any boat finishing after 4 hours shall self-report their GPS finishing time to RC or MD/JAM Liaison within 1 hour of finishing.

**13.2.2** All boats retiring from a race at any time shall inform RC and will be scored RET. [DP]

**13.2.3** All boats continuing to race after sunset will use every reasonable effort to report (via VHF Radio Channel 72) their GPS position on an hourly basis



to other MD/JAM boats continuing to race and the MD/JAM/Multihull liaison.

- 13.3** All Fleets: There is no time limit for the Dobson Cup, Hulings Around Madeline, and Silver Bay race.

#### **14. Protests and Request for Redress**

- 14.1** Protest forms will be available at the official notice board.
- 14.2** For each class, the protest time limit is 90 minutes after the last boat has finished the last race of the day of each sailing event or the RC signals no more racing today, whichever is later.
- 14.2.1** Protests shall be delivered to RC Principal Race Officer (PRO) or Chief Judge within the protest time limit.
- 14.2.2** For the requirements stated in RRS 61.3, a *protest* or request for redress by a boat may be met by electronically submitting their protest to the protest committee within the time limit stated in the SI. Information required by RRS 61.2 may be delivered using electronic mail delivery to [WYCAISPROTEST@gmail.com](mailto:WYCAISPROTEST@gmail.com). Instructions on how to file a protest form may be found on the relevant event page on [YachtScoring.com](http://YachtScoring.com). The party submitting a protest electronically should travel to the regatta venue as quickly as possible to participate in an arbitration meeting or protest hearing.
- 14.3** Notices will be posted on the Official Notice Board as soon as reasonably possible after receiving the protest/request for redress to inform competitors of hearings in which they are parties or named as witnesses. Where reasonably possible, hearings will be scheduled for the day the protests were received and in the order the protests were received. In unusual circumstances and with sufficient notice, the Protest Committee (PC) may schedule a hearing for a different day, time or order.
- 14.4** Failure to hear radio communication required by the RC under SI 3.1 and 3.2; shall not be grounds for redress. This changes RRS 62.

#### **15. Scoring:**

- 15.1** Corrected time will be determined using the PHRF Time on Distance calculation.
- 15.2** A boat that does not finish within the specified time period (SI 13) shall be scored points for the finishing place one more than the number of boats that finished in the time period. These boats will be assigned the scoring abbreviation of TLE. This changes RRS 35, A4 and A5.
- 15.3** A boats series score shall be the total of all her races. There are no throw-outs. This changes RRS A2.1.
- 15.4** One race is required to be completed to constitute a series.

#### **16. Safety Regulations.**

- 16.1** Each boat shall comply with the following: [DP]





- 16.1.1** All U.S. Coast Guard and other applicable governmental laws, rules and regulations.
- 16.1.2** The 2019 AIS Safety Equipment Requirements which can be found at [www.wyc.org/ais](http://www.wyc.org/ais) and the Yachtscoring.com page for each event.
- 16.1.3** A boat that retires from a race shall notify the race committee as soon as possible. The Race Committee will monitor VHF.

**16.1.4** Personal Flotation Devices

**16.1.4.1** At the Start and Finish of each race, each person on board each boat is required to wear a USCG or ISO approved personal flotation device (PFD). The use of an ISO approved PFD does not negate the USCG requirement that each vessel must have at least one (1) USCG approved Type III or V life jacket for each person on board. Belt pack style PFD's are not allowed.

**16.1.4.2** For any boat with only two (2) individuals on board, both individuals shall wear a life jacket at all times while afloat, except briefly while changing or adjusting clothing or personal equipment.

**16.2** Abandonment Due to Weather

**16.2.1** Races for individual fleets may be abandoned or postponed when the 5-minute mean wind speed exceeds 24 knots or wind gusts exceed 30 knots, as determined by PRO. If these conditions exist 90 minutes before the scheduled warning signal, signals will be made ashore. If these conditions develop less than 90 minutes prior to the scheduled warning signal start, signals may be made by RC Signal Boat.

**17. Radio Communication**

- 17.1** All official radio communications shall be made on VHF Channel 72.
- 17.2** Except in an emergency, a boat that is racing shall not make voice or data transmissions and shall not receive voice or data communication not available to all boats. This restriction also applies to mobile telephone, tablets, computers, and similar devices. [DP] [NP]
- 17.3** Boats are reminded of their obligation to maintain a radio watch on VHF Channel 16 to be compliant with USCG regulations.
- 17.4** A courtesy hail will be made each day at 0900 on VHF.

**18. Prizes.**

**18.1** 1st, 2nd & 3rd place trophy prizes will be awarded for each fleet. Additional trophy prizes or awards may be awarded at the discretion of the Trophy Chairperson.



## 19. DISCLAIMER OF LIABILITY, WAIVER AND RELEASE OF LIABILITY

19.1 Sailing is an activity that has an inherent risk of damage and injury, including without limitation bodily injury, personal injury, permanent disability, and death. Each person (including without limitation owner, skipper, crew, spectators, officials, volunteers and others) participates in each race, social event, and/or associated activity(ies) entirely at his/her **own risk**. See RRS 4, “Decision to Race”.

19.2 ORGANIZING AUTHORITY, RACE COMMITTEE, PROTEST COMMITTEE, SPONSORS, HOST CLUB AND VENUE (AND EACH OF THEIR RESPECTIVE OFFICERS, DIRECTORS, EMPLOYEES, CONTRACTORS, OFFICIALS, MEMBERS, GUESTS, VOLUNTEERS, REPRESENTATIVES AND ALL OTHER PERSONS IN THEIR CAPACITY OF ASSISTING A RACE, SOCIAL EVENT AND/OR ASSOCIATED ACTIVITIES) (COLLECTIVELY, “**RACE ORGANIZERS**”) WILL NOT BE RESPONSIBLE OR LIABLE FOR ANY ACTION, CLAIM OR SUIT (COLLECTIVELY, “**CLAIMS**”) OR LIABILITY, LOSS, DAMAGE, ACCIDENT OR INJURY WHATSOEVER (INCLUDING BODILY INJURY, PERSONAL INJURY, PERMANENT DISABILITY OR DEATH) (COLLECTIVELY, “**DAMAGES**”) TO ANY PERSON, PROPERTY OR BOAT WHETHER CAUSED BY, ARISING OR RESULTING FROM THEIR ACT, ERROR, OMISSION OR ALLEGED NEGLIGENCE OR MISCONDUCT, WEATHER OR SEA CONDITIONS, HAZARDS OF ANY KIND, DEFECTS OR FAILURE OF BOATS TO BE SEAWORTHY IN HULL, RIGGING OR GEAR, OR ANY ACTS, ERRORS OR OMISSIONS OR ALLEGED NEGLIGENCE OR MISCONDUCT OF **RACE ORGANIZERS** OR OTHER PARTICIPANTS OR BOATS WHICH MAY OCCUR DURING OR ARISING OUT OF OR IN CONNECTION WITH ANY RACE, REGATTA, EVENT, CRUISE, SPECTACLE, SOCIAL EVENT, RACE FACILITIES OR ANY ACTIVITY SCHEDULED, SPONSORED OR AIDED IN WHOLE OR IN PART BY ANY **RACE ORGANIZER(S)**, TO THE FULLEST EXTENT PERMITTED BY LAW.

19.3 BY PARTICIPATING, EACH PARTICIPANT (AND IN THE CASE OF CHILDREN AND MINORS, EACH PARTICIPANT’S PARENT OR GUARDIAN) FOREVER WAIVES, DISCHARGES AND RELEASES ANY AND ALL **CLAIMS** WHATSOEVER AGAINST **RACE ORGANIZERS** FOR ANY **DAMAGES** TO ANY PERSON, PROPERTY OR BOAT (I) SUSTAINED IN CONJUNCTION WITH OR PRIOR TO, DURING, OR AFTER EACH RACE, SOCIAL EVENT AND ASSOCIATED ACTIVITIES; OR (II) ARISING, RELATING OR RESULTING FROM USE OF RACE FACILITIES OR PARTICIPATION IN ANY RACE, SOCIAL EVENT OR ASSOCIATED ACTIVITIES, TO THE FULLEST EXTENT PERMITTED BY LAW.

19.4 PARTICIPANT RELEASES ALL **RACE ORGANIZERS** FROM ALL **CLAIMS** ON ACCOUNT OF GIVING ASSISTANCE, AID, CARE, ADVICE, RESCUE, FIRST AID, TREATMENT OR SERVICES.



19.5 OWNERS AND SKIPPERS OF ALL PARTICIPATING BOATS ARE REQUIRED TO INFORM ALL CREWMEMBERS OF THIS DISCLAIMER OF LIABILITY AND RELEASE OF LIABILITY AS A CONDITION OF ENTRY.

## **20. Insurance**

**20.1** All boats must maintain Liability Insurance in full force and effect during racing which will include a General Liability policy written by a reputable insurance company insuring the owner and any operators against liability for bodily injury in limits of not less than \$300,000 and for property damage of not less than \$100,000. Each boat will present proof of insurance upon OA's request.

## **21. Publicity and Photographer's Rights**

As a condition of participation, each participant (on behalf of him/herself and their children and minors) grants Organizing Authority, sponsors and their designated photographers the perpetual, irrevocable right, license and permission to use, publish and distribute the participant's name, photos, video, images and statements of them and their boat and crew in all forms and media worldwide (including without limitation Internet) for any purposes whatsoever (including without limitation advertising, promotions, sales of pictures, etc.) without compensation or further permission





## Appendix A – Schedule

Date (all 2019)	Warning	Series – See Note A	Scheduled Races		Comments
			MD JAM*	Buoy	
May 25	1100	Spring Series	1	2	Note C
Mar 26	1100	Spring Series	1	2	Note C
May 27	1100	Spring Series	1	2	Note C
Jun 15	1100	Single/Double Handed	1	1	Note B
Jun 29	1000	Summer Series	1	1	Around the Islands Race
Jul 1	Note A	Summer Series	Note A	Note A	Bayfield Race Week
Jul 2	Note A	Summer Series	Note A	Note A	Bayfield Race Week
Jul 3	Note A	Summer Series	Note A	Note A	Bayfield Race Week
Jul 4	Note A	Summer Series	Note A	Note A	Bayfield Race Week
Jul 5	Note A	Summer Series	Note A	Note A	Bayfield Race Week
Aug 10	1000	Silver Bay Scramble	1	1	Note B
Aug 31	1030	Fall Series Regatta	1	1	Bill Hulings Around Madeline Race
Sept 1	1100	Fall Series Regatta	1	2	
Sept 2	1100	Fall Series Regatta	1	2	
Sept 21	1100	Dobson Regatta	1	1	
Sept 22	1100	Dobson Regatta	1	1	

\*While MD and JAM Fleets are scheduled to sail one race per day, a second race is allowed at the discretion of the RC and/or OA.

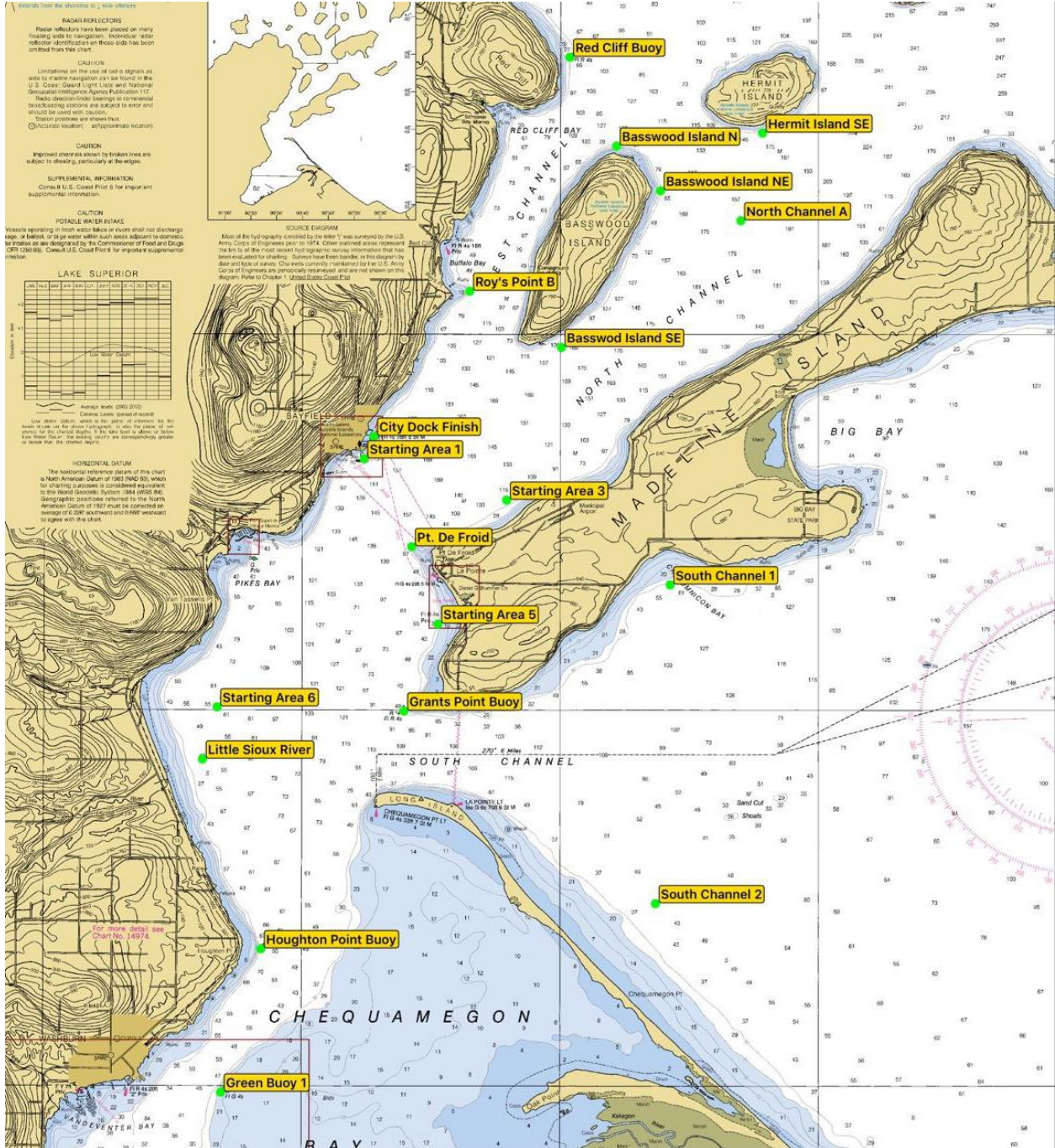
**Note A:** Race schedule (e.g. start times and number of races) during Bayfield Race Week will be specified in Bayfield Race Week Sailing Instructions

**Note B:** Championship Series. AIS Championship Series is open to all yachts that have paid their WYC and AIS fleet dues for the season. The Championship is a summation of the series points awarded for the Spring, Summer and Fall series plus the Dobson regatta. See <http://wyc.org/aisresults> for cumulative Championship Series results and calculation method. The series excludes the Silver Bay Scramble and the Single/Double handed race for all fleets.

**Note C** There will be a 1-day mid-distance race for all fleets. This race will serve to bring all competitors together on one common course, the exact length of which may be adjusted for some fleets.



## Appendix B – Racing Area

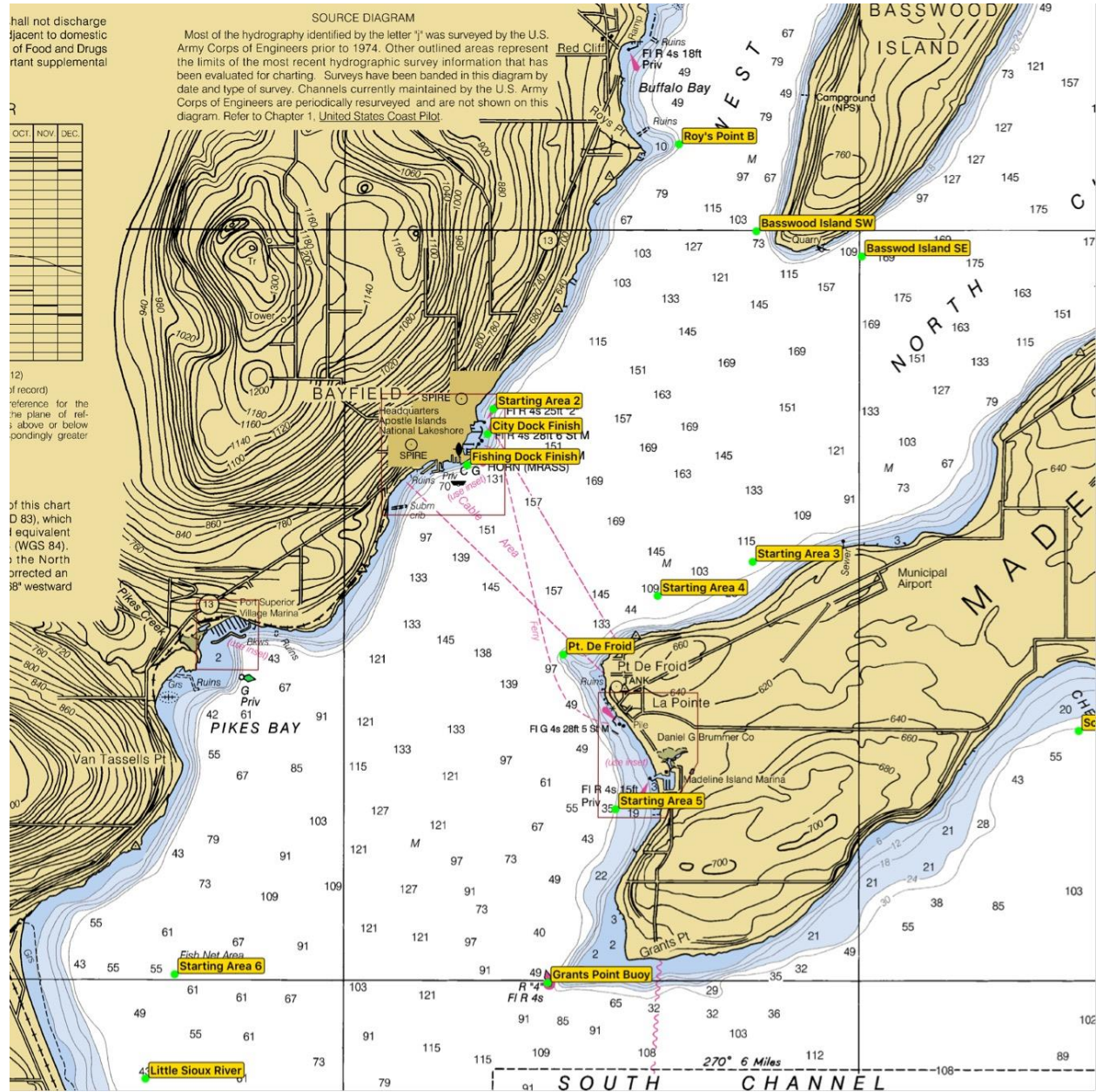


*Note: All Mark locations are approximate.*





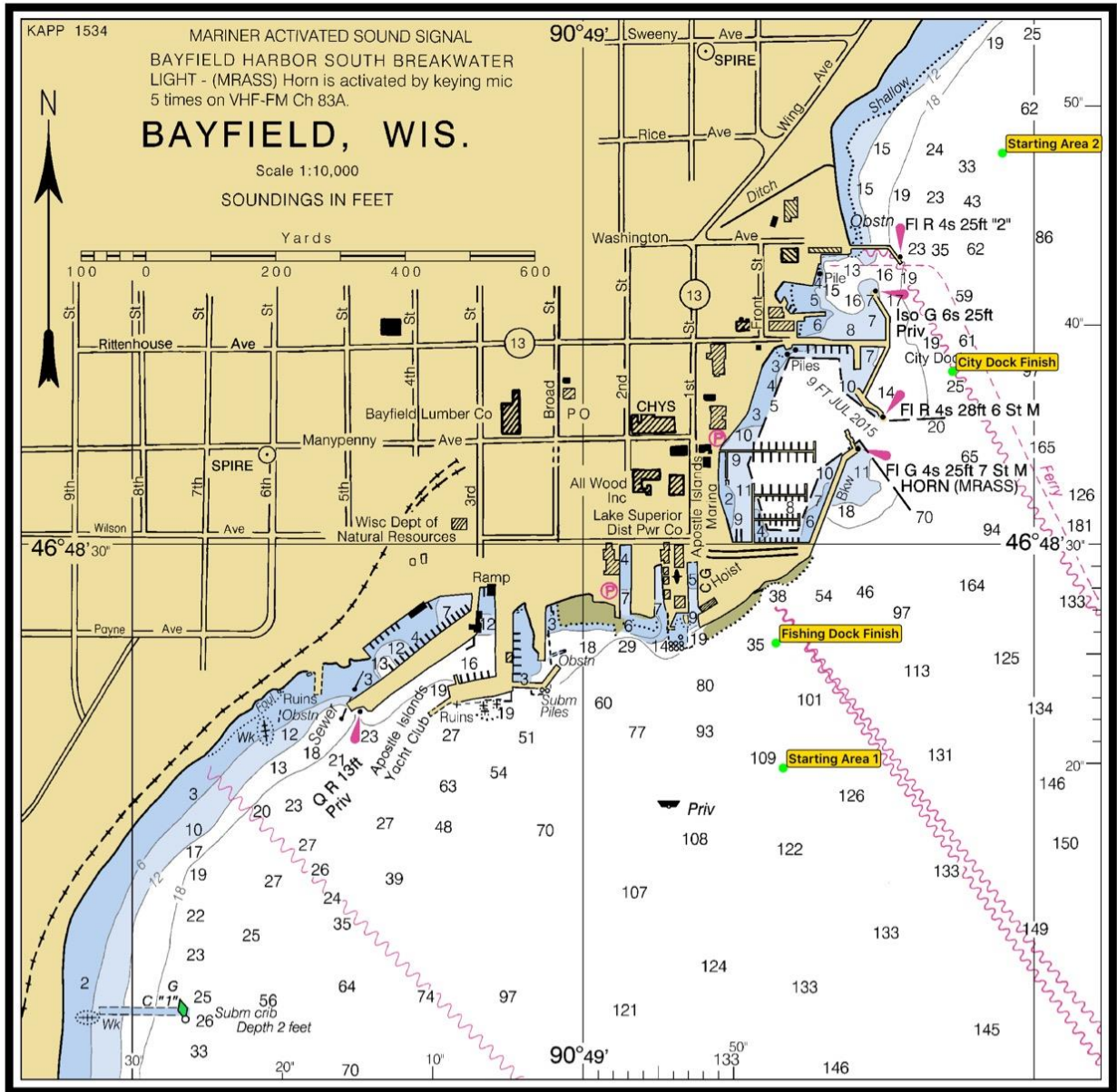
## Appendix B – Racing Area



*Note: All Mark locations are approximate.*



## Appendix B – Racing Area



*Note: All Mark locations are approximate.*





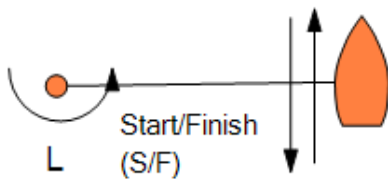
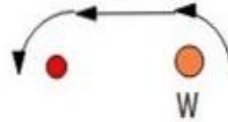
## Appendix B – Waypoint Coordinates

Starting Areas		DMS		DMM	
Waypoint	Description	Latitude	Longitude	Latitude	Longitude
SA1	Starting Area 1 off USCG Station	46°48'19.8"N	90°48'46.7"W	46°48.330'N	90°48.778'W
SA2	Starting Area 2 - North of Bayfield Ferry Do	46°48'47.9"N	90°48'32.1"W	46°48.798'N	90°48.535'W
SA3	Starting Area 3 off Madeline Island Airport	46°47'46.9"N	90°46'00.9"W	46°47.782'N	90°46.014'W
SA4	Starting Area 4 off Pt. De Froid	46°47'33.3"N	90°46'56.2"W	46°47.555'N	90°46.936'W
SA5	Starting Area 5 off of La Pointe	46°46'08.0"N	90°47'20.7"W	46°46.133'N	90°47.344'W
SA6	Starting Area 6 - South of Pikes Bay	46°45'01.7"N	90°51'37.1"W	46°45.029'N	90°51.618'W
Finish Areas		DMS		DMM	
Waypoint	Description	Latitude	Longitude	Latitude	Longitude
CDF	City Dock Finish	46°48'37.9"N	90°48'35.4"W	46°48.632'N	90°48.590'W
FDF	Fishing Dock Finish	46°48'25.5"N	90°48'47.1"W	46°48.425'N	90°48.786'W
Fixed Government Marks		DMS		DMM	
Waypoint	Description	Latitude	Longitude	Latitude	Longitude
GP	Grants Point Buoy	46°44'58.6"N	90°48'00.0"W	46°44.976'N	90°48.001'W
GB1	Green Bouy 1 - South of Houghton Point	46°39'54.3"N	90°51'32.3"W	46°39.906'N	90°51.538'W
HPB	Houghton Point Buoy	46°41'48.7"N	90°50'46.0"W	46°41.812'N	90°50.766'W
RCB	Red Cliff Bouy	46°53'40.5"N	90°44'47.5"W	46°53.675'N	90°44.791'W
Drop Marks		DMS		DMM	
Waypoint	Description	Latitude	Longitude	Latitude	Longitude
BSE	Basswood Island SE	46°49'49.0"N	90°44'57.3"W	46°49.816'N	90°44.954'W
BS	Basswood Island South Tip	46°49'47.0"N	90°45'41.0"W	46°49.784'N	90°45.683'W
BSW	Basswood Island SW	46°49'59.0"N	90°45'58.8"W	46°49.983'N	90°45.980'W
BNNW	Basswood Island NNW	46°52'22.2"N	90°44'20.7"W	46°52.370'N	90°44.344'W
BN	Basswood Island N	46°52'29.6"N	90°43'53.1"W	46°52.494'N	90°43.886'W
BNNE	Basswood Island NNE	46°52'20.4"N	90°43'18.1"W	46°52.340'N	90°43.301'W
BNE	Basswood Island NE	46°51'53.9"N	90°43'02.0"W	46°51.898'N	90°43.033'W
HSE	Hermit Island SE	46°52'40.0"N	90°41'03.2"W	46°52.666'N	90°41.054'W
LSR	Little Sioux River	46°44'20.1"N	90°51'54.0"W	46°44.335'N	90°51.900'W
NCA	North Channel A	46°51'30.0"N	90°41'28.4"W	46°51.500'N	90°41.474'W
PDF	Point De Froid	46°47'09.8"N	90°47'51.2"W	46°47.163'N	90°47.853'W
RPB	Roy's Point B	46°50'33.7"N	90°46'43.9"W	46°50.562'N	90°46.732'W
SC1	South Channel 1 - Chebomnicon Bay	46°46'39.3"N	90°42'50.9"W	46°46.656'N	90°42.848'W
SC2	South Channel 2 - North of Chequamegon	46°42'24.9"N	90°43'08.0"W	46°42.415'N	90°43.133'W
Virtual Marks		DMS		DMM	
Waypoint	Description	Latitude	Longitude	Latitude	Longitude
NOMAD	Bill Hulings Around Madeline Race	46°51'00.0"N	90°33'00.0"W	46°51.000'N	90°33.000'W





## Appendix C – Buoy Courses



### Course Examples:

- **W/L 2** = S-W-F
- **W/L 4** = S-W-L-W-F
- **W/L 6** = S-W-L-W-L-W-F

### Course Examples:

- **W/L 2 O** = S-W-O-F (with Offset)
- **W/L 4 O** = S-W-L-W-F (with Offset)
- **W/L 6 O** = S-W-L-W-L-W-F (with Offset)

Any course listed above may be changed to *finish* at the Bayfield Fishing Dock